

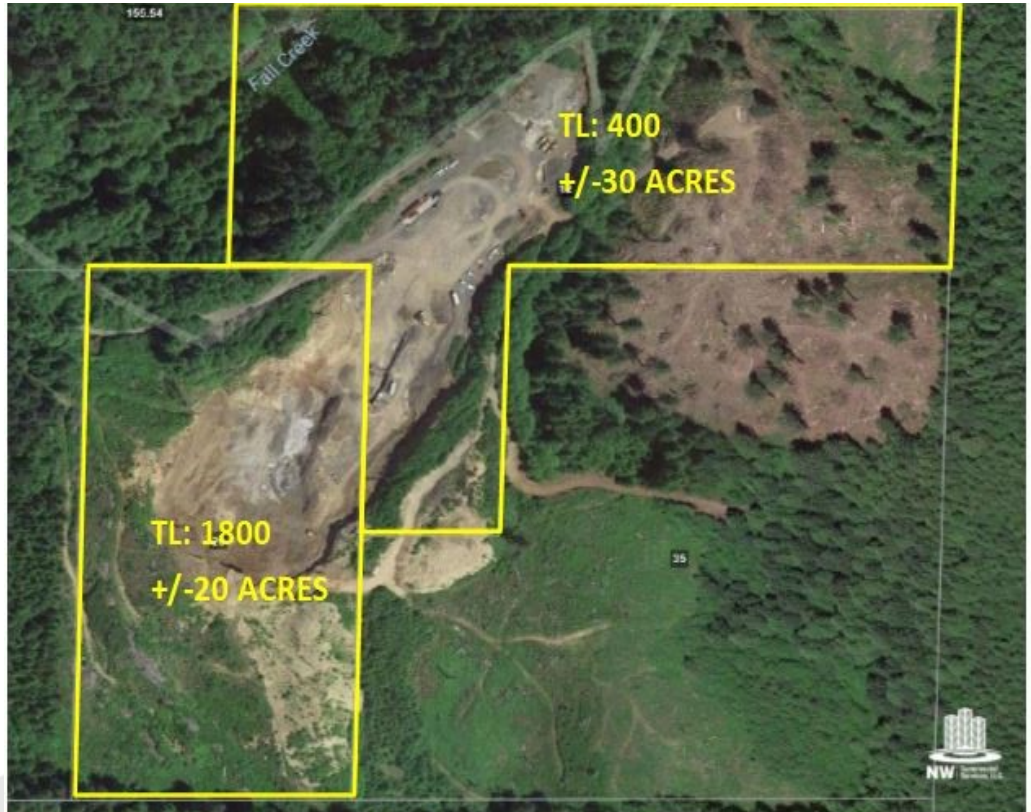


FOR SALE

OPERATING BASALT ROCK QUARRY

LITTLE NESTUCCA RIVER RD
NESKOWIN, OR

**PURCHASE
PRICE: \$850,000.00**



SUMMARY:

- +/-50 acre permitted operational basalt aggregate quarry
- Two tax lots zoned (F) Forest with mineral and aggregate resource overlay
- Per owner quarry produces high quality rock with large reserves
- Easy access to property from Hwy 34
- “Significant Site” Natural Resource designation
- Excellent access from Little Nestucca River Road
- Buyer is solely responsible for independently verifying all Information
- Buyer to perform and rely on its own due diligence investigations

FOR MORE INFORMATION CONTACT:

Jim O’Bryant | Principal Broker

NW | Commercial Services, LLC.

4985 Battle Creek Rd SE. Ste. 101 - Salem, OR 97302

503-586-2000 Office | 503-586-2004 Fax

Jim@nwcommercialservices.com

WWW.nwcommercialservices.com

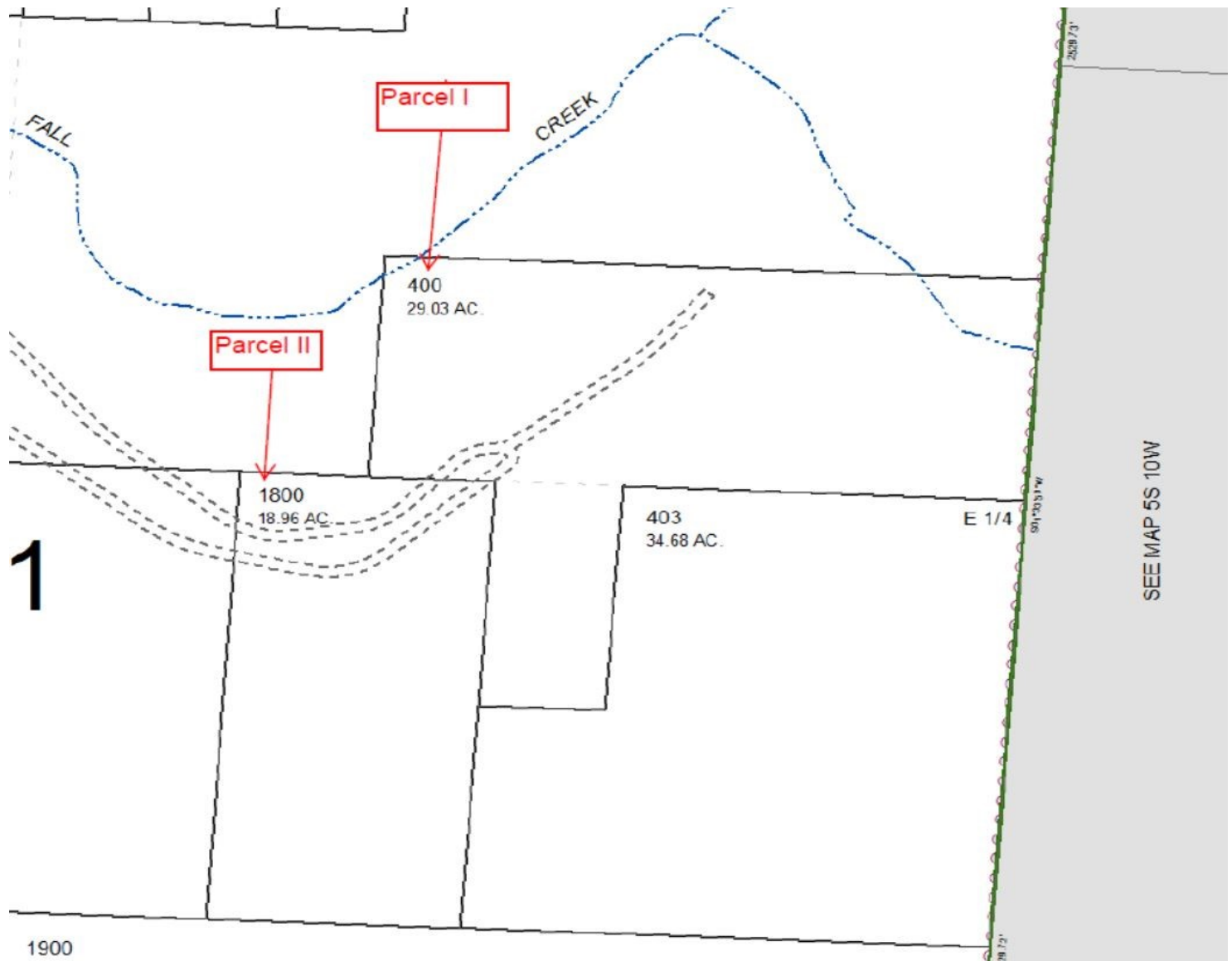
All information contained is from sources deemed reliable and is provided without any representation, warranty or guarantee to its accuracy. Prospective Buyer or Tenant should conduct an independent investigation and verification of all matters deemed to be material, including, but not limited to square footages, zoning, income statements, expenses, property boundary lines. Consult your attorney, accountant, or other professional advisor. All information is subject to change without notice.



FOR SALE

OPERATING BASALT ROCK QUARRY

PLAT MAP



FOR MORE INFORMATION CONTACT:

Jim O'Bryant | Principal Broker

NW | Commercial Services, LLC.

4985 Battle Creek Rd SE. Ste. 101 - Salem, OR 97302

503-586-2000 Office | 503-586-2004 Fax

Jim@nwcommercialservices.com

WWW.nwcommercialservices.com

All information contained is from sources deemed reliable and is provided without any representation, warranty or guarantee to its accuracy. Prospective Buyer or Tenant should conduct an independent investigation and verification of all matters deemed to be material, including, but not limited to square footages, zoning, income statements, expenses, property boundary lines. Consult your attorney, accountant, or other professional advisor. All information is subject to change without notice.